

## Practice with Magic Eraser



When you click in a layer with the magic eraser tool, the tool automatically changes all similar adjacent pixels. If you're working in a layer with locked transparency, the pixels change to the background color; otherwise, the pixels are erased to transparency. You can choose to erase contiguous pixels only or all similar pixels on the current layer.

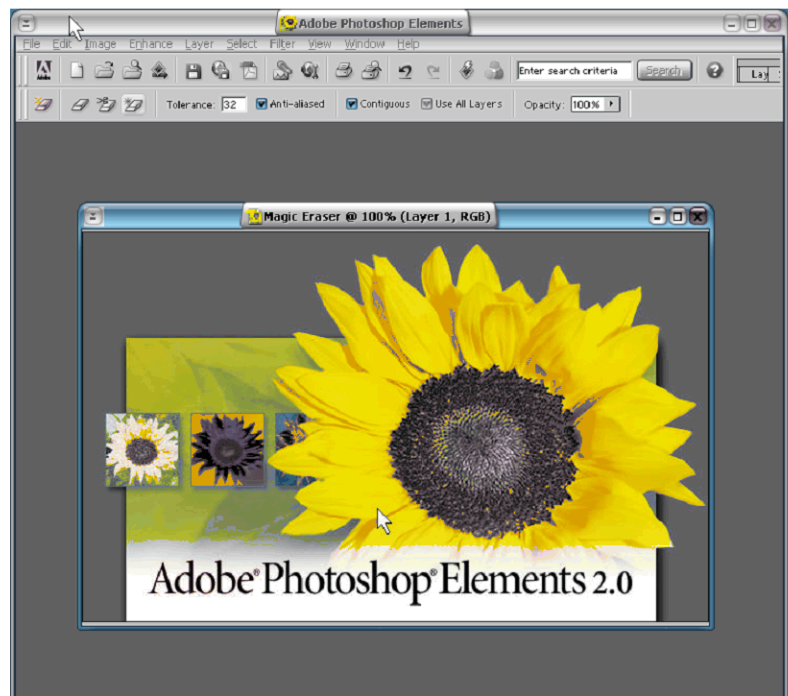
Magic Eraser can be found in The Tool Bar, number 7b

### Lab Exercise

1. From [www.jskeen.com](http://www.jskeen.com), click on “Photoshop Elements Class III” on the left side of your screen.
2. Find “Practice with Magic Eraser” and click on “One”.
3. Copy the picture by right-clicking on the photo, then selecting “copy”
4. Go to PE2, copy in the picture,

using **File→New from Clipboard**

5. Your screen should now look like this:



*We'll now erase the gray background that surrounds the PE logo!*

*Extra Credit: Try the Eraser Tool by itself. How is it different?*

*Try the Background Eraser tool too.*

6. Select the Magic Eraser (# 7E).
7. Using your left mouse button, click on the gray background.
8. Most of the background will disappear, click on the remaining dark background in order to erase it also.
9. Your picture should now look like that shown below.
10. Save the picture as a file on your computer's hard drive.
11. More practice? Return to step #1, but this time click on **Two**.

